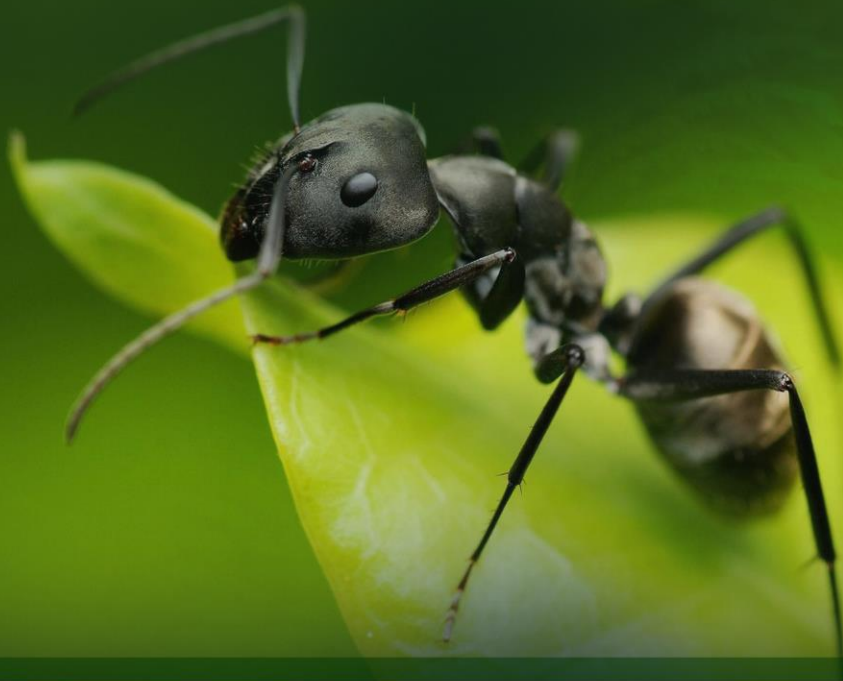


ANTS



ANTS

Physical Identification

There are over 10,000 species of ants found worldwide. These social insects live in colonies with one or more queen present.

The worker ants range in length from about 2 to 10 millimetres with the queens being slightly larger. They are most commonly black, although some species are red, red and black, or brown. For a more detailed illustration of the ant family please refer to the illustrations below.

Feeding

Ants feed on sweets, starches and greasy substances.

Lifecycle

Queens can live up to 15 years while the average lifespan for workers is between 4-7 years.

Harbourage

Ants are among the most prevalent pests in households. They are also commonly found in restaurants, hospitals, offices, warehouses, and other buildings where they have access to food and water.

Ants often become a nuisance when they enter our homes searching for food and can even cause severe structural damage when they burrow through decaying wood to nest, which is typical behaviour of carpenter ants.

Ants are usually found indoors, along walls, or hiding under baseboards and carpets.

Outdoors they are found under decorative landscaping, wood piles, or rocks. Nests are found underground, in trees, or within structures such as your home.

Health Risk

Ants are common, household insects that have been known to transmit diseases such as Salmonellosis and Staphylococcus.



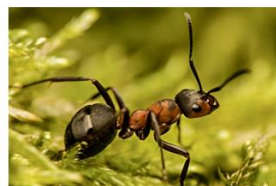
Carpenter ant



Cornfield ant



Crazy ant



Field ant



Fire ant



House ant



Pharoah ant